

GSM 900 Band Pass Filter

Model No : ABF - 925 - M3

SPECIFICATIONS:

ELECTRICAL

PASS BAND FREQUENCY : 890 - 960 MHz

PASS BAND INSERTION LOSS

@ 890.0 MHz : 3.0 dB (max)

@ 890.5 MHz : 2.5 dB (max)

@ 960.0 MHz : 0.7 dB (max)

REJECTION

@ 888.5 MHz : 35.0 dB (min)

@ 886.8 MHz : 55.0 dB (min)

RETURN LOSS

@ 890.0-960.0 MHz : 18.0 dB (min)

IMPEDANCE (In / Out) : 50 ohms

Temperature : +5° to +50° C

Dimensions : 245.5 x 73 x 73.5 mm

Connectors : Two 7-16 Type Female connectors.

Weight : 2.5 kg (approx)

Regd. & Corporate Office

Plot No. 16, Sector-III, HUDA Techno Enclave,
Opp. K. Raheja IT Park, Madhapur,
Hyderabad - 500 081, India.
Tel : +91-40-2311 5050/51/52
Fax : +91-40-2311 2336

Production Unit

Sy. No. 227 & 229, Plot No. 31, Phase-II
IDA, Cherlapally, R.R. District,
Hyderabad - 500 051, India.
Tel : +91-40-2726 2999, 6458 5519
Fax : +91-40-2726 2888

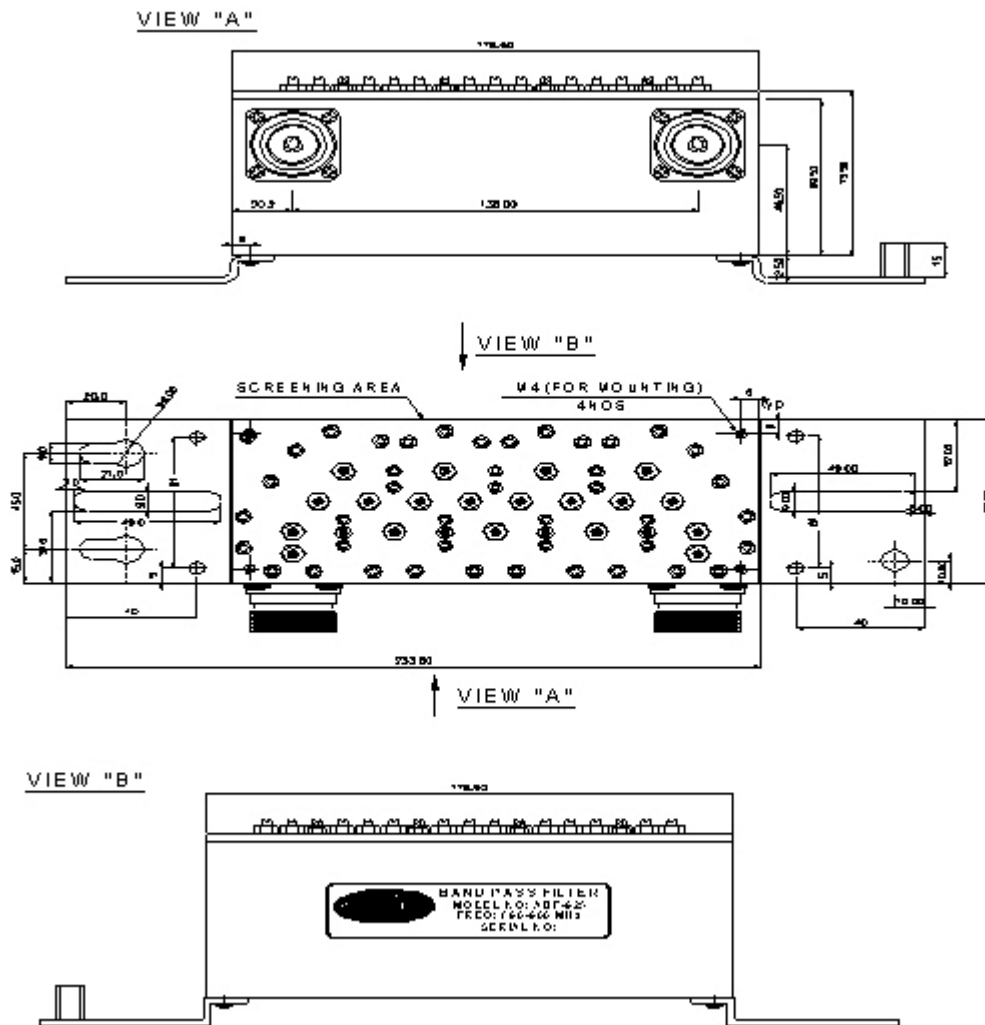
Avantel Limited

www.avantel.in
info@avantel.in

GSM 900 Band Pass Filter

Model No : ABF - 925 - M3

Outline Drawing:



All dimensions are in millimeters