

# **GSM 900 Band Pass Filter**

Model No : ABF - 925

## **SPECIFICATIONS:**

### **ELECTRICAL**

Pass Band Frequency	:	890 - 960 MHz
Pass Band Insertion Loss	:	
@ 890.0 MHz	:	2.5 dB (max)
@ 960.0 MHz	:	0.5 dB (max)
Stop Band Attenuations	:	
@ 885.0 MHz	:	45.0 dB (min)
@ 886.4 MHz	:	40.0 dB (min)
@ 886.8 MHz	:	35.0 dB (min)
Return Loss (over pass band)	:	18.0 dB (min)
Impedance (In / Out)	:	50 ohms
Input Power	:	55 dBm
Temperature	:	+ 5 <sup>o</sup> C to + 50 <sup>o</sup> C

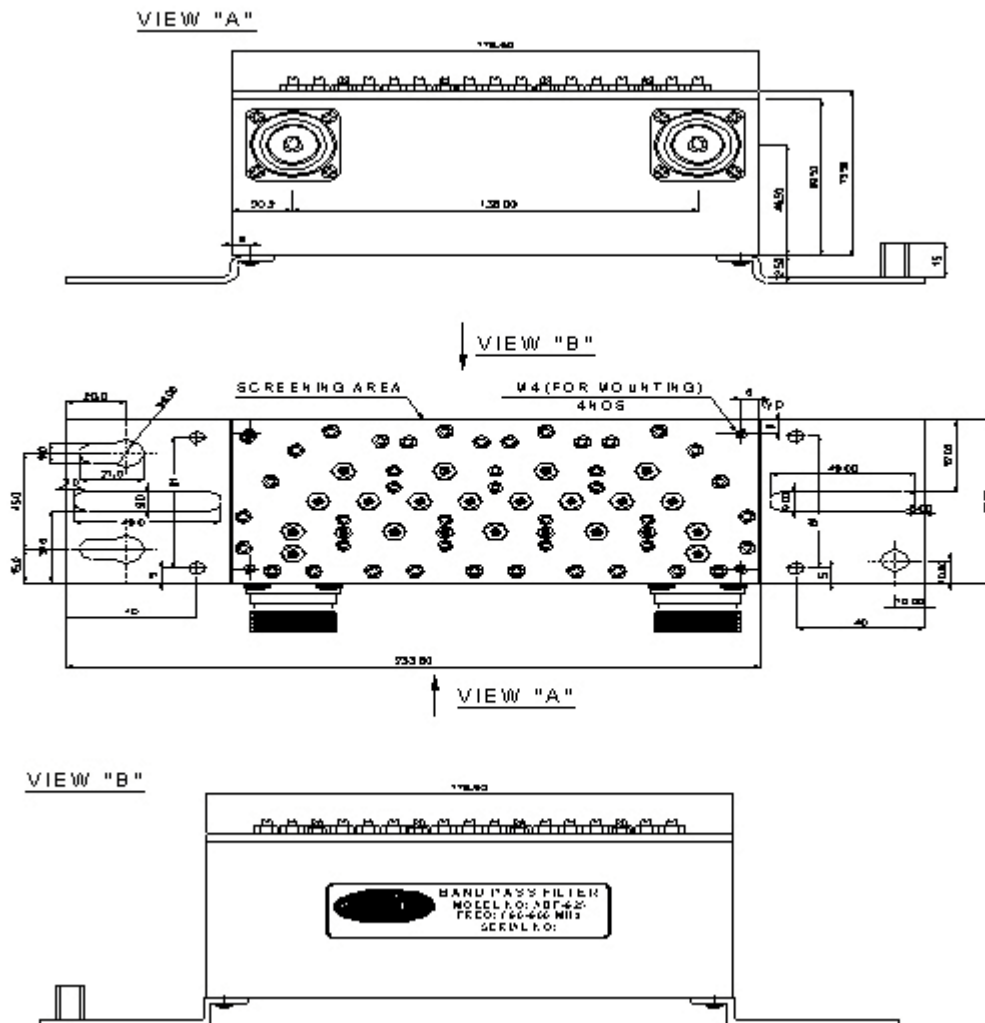
### **MECHANICAL**

Dimensions (excluding connectors)	:	176.5x73x73.5 mm (6.94" X 2.87" X 2.89")
Weight	:	2kg (4.40 lb)
Connectors	:	Two 7-16 Type Female connectors. Or customer specific.

# GSM 900 Band Pass Filter

Model No : ABF - 925

## Outline Drawing:



All dimensions are in millimeters