

GSM 900 Band Pass Filter

Model No : ABF - 928

SPECIFICATIONS:

ELECTRICAL

Pass Band Frequency : 896 - 960 MHz

Pass Band Insertion Loss
@ 896.0 MHz : 0.70 dB (max)

@ 960.0 MHz : 0.50 dB (max)

Stop Band Attenuations

@ 885.0 MHz : 45.0 dB (min)

@ 886.8 MHz : 40.0 dB (min)

Return Loss (over pass band) : 18.0 dB (min)

Impedance (In / Out) : 50 ohms

Input Power : 55 dBm

Temperature : + 5^oC to + 50^oC

MECHANICAL

Dimensions (excluding connectors) : 176.5 x 73 x 73.5 mm (6.94" X 2.87" X 2.89")

Weight : 2kg (4.4 lb)

Connectors : Two 7-16 Type Female connectors.

Or customer specific.

Avantel Limited

Plot No. 16, Sector-III, HUDA Techno Enclave, Opp. K. Raheja IT Park, Madhapur, Hyderabad - 500 081, India.

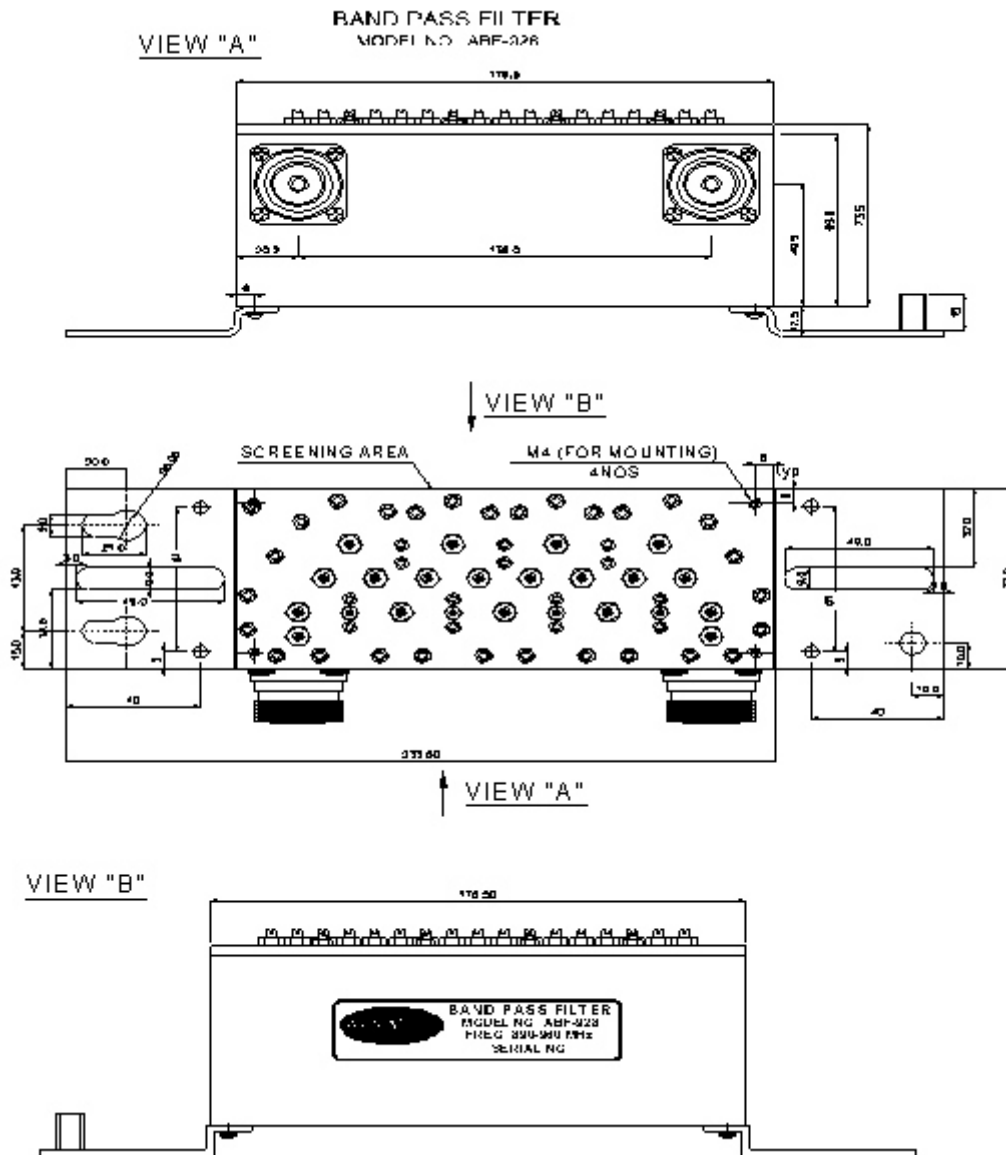
Tel : +91-40-2311 5050/51/52 Fax : +91-40-2311 2336

e-mail : info@avantel.in, www.avantel.in

GSM 900 Band Pass Filter

Model No : ABF - 928

Outline Drawing:



All dimensions are in millimeters